

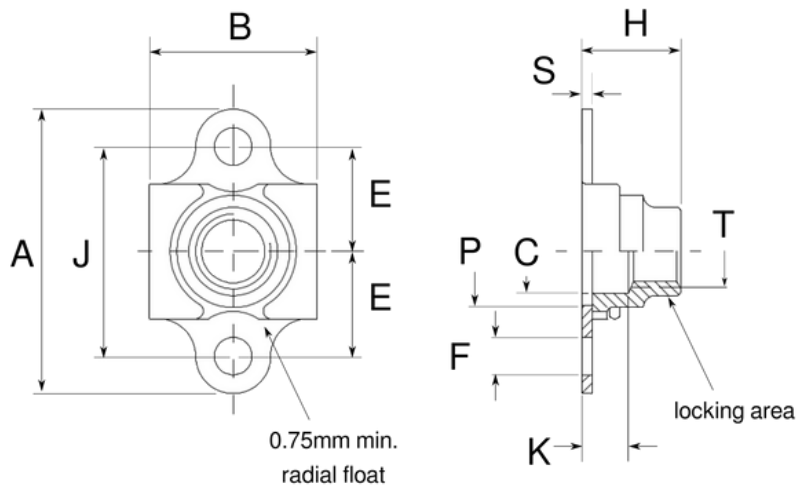
FLOATING ANCHOR NUTS 2 LUG

SELF LOCKING · 1100 MPa · 235°C · STANDARD

FREE OF CADMIUM AND CHROME VI

BlueFast.

by KL-PROJECTS



Partnumber	Thread T	A max	B max	C +0.05	E +0.1	F	J +0.05
BFA FL2A M03050 *	M3 x 0,5 4H6H	23.2	10.6	-	8.5	2.5	17.00
BFA FL2A M04070	M4 x 0,7 4H6H	23.2	10.6	4.2	8.5	2.5	17.00
BFA FL2A M05080	M5 x 0,8 4H6H	25.2	11.0	5.2	9.5	2.5	19.00
BFA FL2A M06100	M6 x 1,0 4H5H	29.2	13.1	6.2	11.0	3.3	22.00
BFA FL2A M08100 *	M8 x 1,0 4H5H	33.2	15.5	8.4	13.0	3.3	26.00
BFA FL2A M08125	M8 x 1,25 4H5H	33.2	15.5	8.4	13.0	3.3	26.00
BFA FL2A M10125 *	M10 x 1,25 4H5H	41.0	17.3	10.4	16.0	3.3	32.00
BFA FL2A M10150	M10 x 1,5 4H5H	41.0	17.3	10.4	16.0	3.3	32.00

Partnumber	Thread T	H max	K min	P min	S max	Float min	Weight**
BFA FL2A M03050 *	M3 x 0,5 4H6H	3.2	-	4.5	0.7	0.75	1.5 g
BFA FL2A M04070	M4 x 0,7 4H6H	5.2	1.6	5.5	0.7	0.75	1.7 g
BFA FL2A M05080	M5 x 0,8 4H6H	6.2	1.6	6.5	0.7	0.75	1.9 g
BFA FL2A M06100	M6 x 1,0 4H5H	7.2	1.6	7.5	0.7	0.75	3.3 g
BFA FL2A M08100 *	M8 x 1,0 4H5H	8.2	1.6	9.5	0.85	0.75	6.3 g
BFA FL2A M08125	M8 x 1,25 4H5H	8.2	1.6	9.5	0.85	0.75	6.3 g
BFA FL2A M10125 *	M10 x 1,25 4H5H	9.9	1.6	11.5	1.0	0.75	9.5 g
BFA FL2A M10150	M10 x 1,5 4H5H	9.9	1.6	11.5	1.0	0.75	9.5 g

* special sizes on request

** approximate weight, indication only

MATERIAL

ALLOY STEEL 25CD4 / C45

HARDNESS

MAX. 44 HRC

FINISH & IDENTIFICATION

ZINC-NICKEL PLATING WITH TRIVALENT

CHROMIUM TREATMENT + MOS2 DFL

+ BLUE DOT IDENTIFICATION

THREAD

RECOMMENDED TOLERANCE

FOR MALE THREAD IS 4h6h

(SUITABLE FOR M AND MJ THREAD PROFILE)

LOCKING & PERFORMANCE

LOCKING BY 2 CRIMP DEFORMATION

LOCKING TORQUE AND PERFORMANCE

ACCORDING TO LN65016