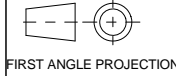


A2 INSTALLATION DRAWING

If this document is printed in hardcopy, it is for information use only and therefore is not subject to updating controls. Always refer to viewer for latest issue.



THIS DRAWING IS CONFIDENTIAL AND IS SUPPLIED ON THE EXPRESS CONDITION THAT IT SHALL NOT BE LOANED OR COPIED OR DISCLOSED TO ANY OTHER PERSON OR USED FOR ANY OTHER PURPOSE WITHOUT THE WRITTEN CONSENT OF AP RACING LTD.

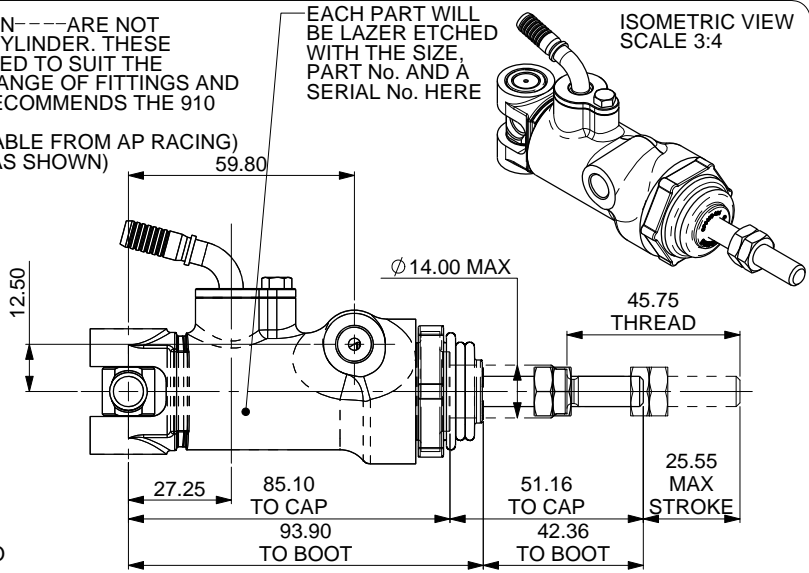
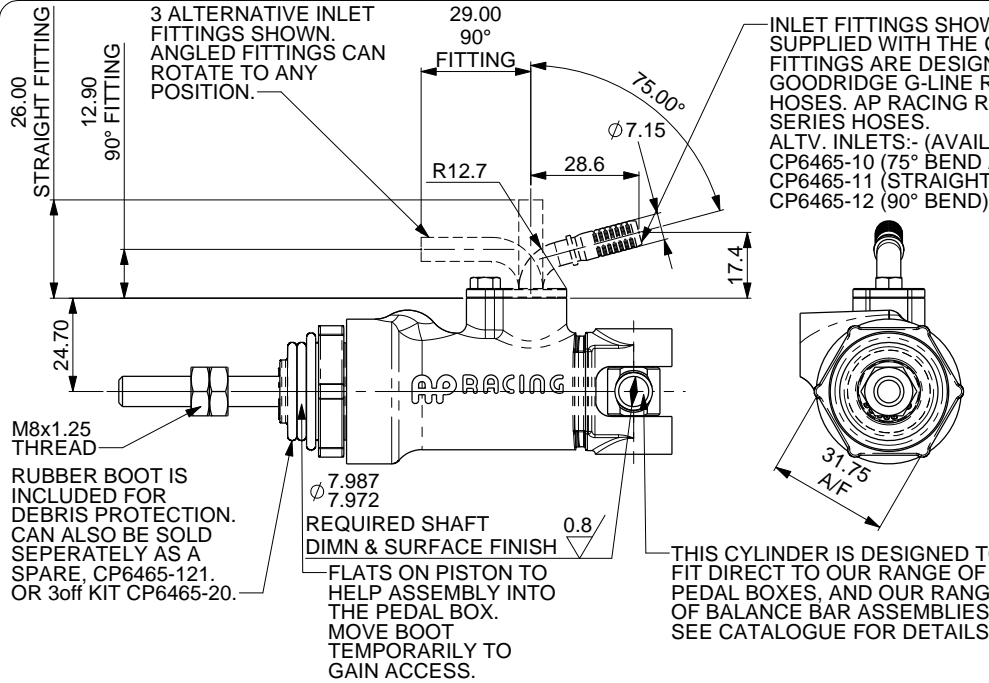


AP Racing
Wheler Road
Coventry
CV3 4LB

Tel: +44 024 7663 9595
Fax: +44 024 7663 9599
e-mail: sales@apracings.com
Web site: http://www.apracings.com

© AP Racing Ltd. 2016

Issue No.	Alterations		Zone	Initials
	Date & No.	Particulars		
1	07/06/16 B6816	FIRST ISSUE	#	THS
2	21/06/16 B6816_12	WAS 1 ME21101 M8x1.25 LOCK NUT IN ALL VIEWS AND ASSEMBLIES. NOW 2.	#	THS
3	22/06/16 B6816_13	SHEET 2 BOOT INCLUDED IN REPAIR KIT. REF 18 AKS PLUG REMOVED FROM REPAIR KIT. REF 5 SLEEVE REMOVED FROM REPAIR KIT. REF 6	#	THS
4	06/07/16 B6816_16	SHEET 1 POTENTIOMETER KIT OPTION. NOTE AND DRAWING REMOVED. CP6467-254PRME WAS CP6465-254PRME	5B C8	THS



GENERAL DESCRIPTION

THIS PULL TYPE MASTER CYLINDER HAS BEEN DESIGNED TO BE MORE EFFICIENT THAN NORMAL MASTER CYLINDERS AND TO BE USED WITH ABS BRAKING SYSTEMS. THIS IS DUE TO THE COMPACT NATURE, THERE IS LESS CHANCE OF UNWANTED SIDE LOADING. THERE IS A CENTRE VALVE TO REDUCE NIBBLE OF THE MAIN SEAL. DESIGNED INTO THE BACK OF THE CYLINDER IS NEEDLE ROLLER BEARING CLEVIS. THIS HAS BEEN DESIGNED TO FIT INTO OUR HIGH EFFICIENCY AND LOW HYSTERESIS BALANCE BAR. THE SPECIAL INLET FITTING AND 90deg OUTLET ALLOWS THE CYLINDER TO SIT LOW BUT WITHOUT TRAPPING AIR. OUR SELECTION OF RECOMMEND OUTLETS ARE SHOWN ON SHEET 2.

THIS MASTER CYLINDER HAS THE OPTION TO BE SUPPLIED WITH AN ANTI-KNOCKBACK PLUG TO REDUCE THE EFFECT OF PAD KNOCKBACK. SEE SHEET 2 FOR MORE DETAILS.

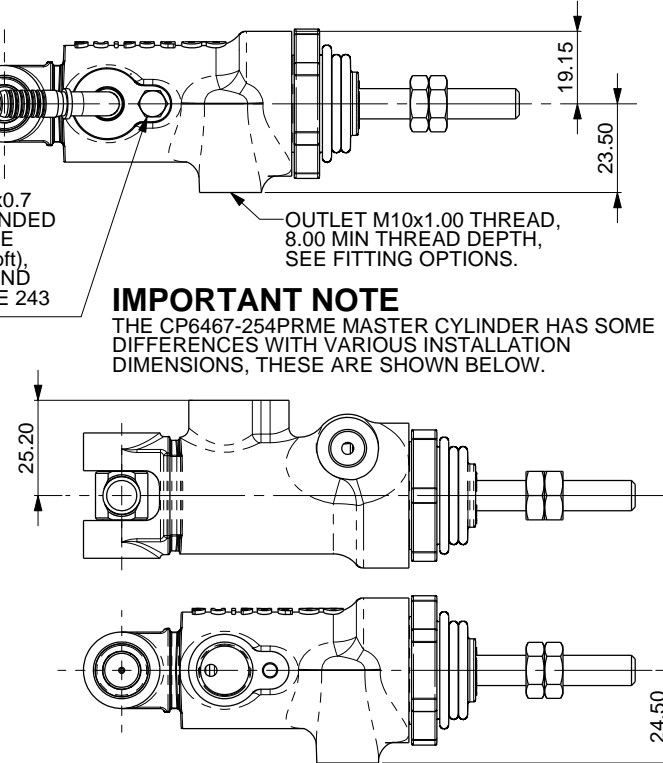
APPROX. WEIGHTS RANGE FROM 240grams TO 280grams.

HEX HEAD BOLT M4x0.7 THREAD, RECOMMENDED TIGHTENING TORQUE 3.0 - 3.5Nm (2.2 - 2.5lbf), WE ALSO RECOMMEND THE USE OF LOCTITE 243 THREAD LOCKER.

OUTLET M10x1.00 THREAD, 8.00 MIN THREAD DEPTH, SEE FITTING OPTIONS.

IMPORTANT NOTE

THE CP6467-254PRME MASTER CYLINDER HAS SOME DIFFERENCES WITH VARIOUS INSTALLATION DIMENSIONS, THESE ARE SHOWN BELOW.



PART NUMBER	CORRECTED BORE SIZES FOR CALCULATIONS	REFERENCE DIMENSIONS		
		BORE Ø (mm)	PISTON Ø (mm)	AREA (mm²)
CP6467-149PRME	14.9 (0.587")	19.05	11.90	173.80
CP6467-162PRME	16.2 (0.638")	19.05	10.00	206.48
CP6467-173PRME	17.3 (0.681")	22.23	14.00	234.01
CP6467-188PRME	18.8 (0.740")	22.23	11.90	276.73
CP6467-202PRME	20.2 (0.795")	22.23	9.25	320.75
CP6467-212PRME	21.2 (0.835")	25.40	14.00	352.77
CP6467-218PRME	21.8 (0.858")	25.40	13.00	373.98
CP6467-224PRME	22.4 (0.882")	25.40	11.90	395.49
CP6467-237PRME	23.7 (0.933")	25.40	9.25	439.51
CP6467-254PRME	25.4 (1.000")	26.99	9.25	504.93

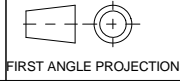
NOTE: OPTIMUM PULL TYPE CYLINDER DESIGN MEANS THAT TO USE STANDARDS SEAL SIZES AND BORE SIZES, THERE WOULD BE A SLIGHT VARIATION FROM STANDARD CYLINDERS. THE SIZES WERE ALSO ADJUSTED TO GIVE EQUAL STEPS BETWEEN THE DIFFERENT SIZES.

THE TABLE SHOWS THE MASTER CYLINDER PART NUMBERS AND A BORE SIZE THAT WOULD REFLECT A PUSH TYPE CYLINDER, THE CORRECTED BORE SIZE. THE PART NUMBER ALSO REFLECTS THE CYLINDER SIZE.

SCALE 1:1	SHEET 1 OF 2
DRAWN T HARGRAVE-SMITH	
APPROVED	
DERIVED FROM	
TITLE CP6467 MASTER CYLINDER CUSTOMER DRAWING	
DRG NO.	CP6467-1CD

A2 INSTALLATION DRAWING

If this document is printed in hardcopy, it is for information use only and therefore is not subject to updating controls. Always refer to viewer for latest issue.



THIS DRAWING IS CONFIDENTIAL AND IS SUPPLIED ON THE EXPRESS CONDITION THAT IT SHALL NOT BE LOANED OR COPIED OR DISCLOSED TO ANY OTHER PERSON OR USED FOR ANY OTHER PURPOSE WITHOUT THE WRITTEN CONSENT OF AP RACING LTD.



AP Racing
Wheler Road
Coventry
CV3 4LB

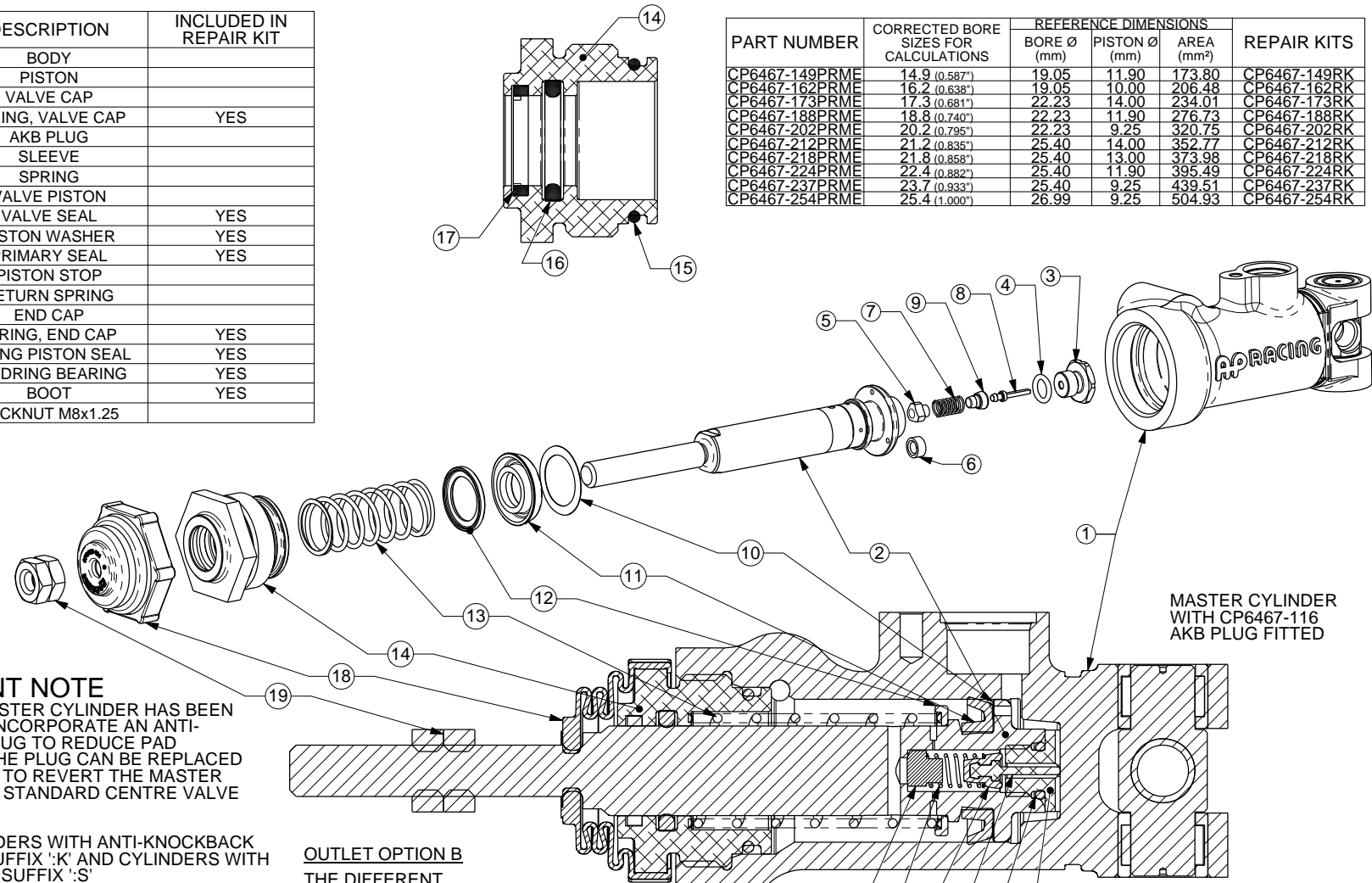
Tel: +44 024 7663 9595
Fax: +44 024 7663 9559
e-mail: sales@apracing.co.uk
Web site: http://www.apracing.com

© AP Racing Ltd. 2016

REF	DESCRIPTION	INCLUDED IN REPAIR KIT
1	BODY	
2	PISTON	
3	VALVE CAP	
4	O-RING, VALVE CAP	YES
5	AKB PLUG	
6	SLEEVE	
7	SPRING	
8	VALVE PISTON	
9	VALVE SEAL	YES
10	PISTON WASHER	YES
11	PRIMARY SEAL	YES
12	PISTON STOP	
13	RETURN SPRING	
14	END CAP	
15	O-RING, END CAP	YES
16	D-RING PISTON SEAL	YES
17	SLYDRING BEARING	YES
18	BOOT	YES
19	LOCKNUT M8x1.25	

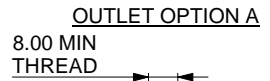
PART NUMBER	CORRECTED BORE SIZES FOR CALCULATIONS	REFERENCE DIMENSIONS			REPAIR KITS
		BORE Ø (mm)	PISTON Ø (mm)	AREA (mm²)	
CP6467-149PRME	14.9 (0.587")	19.05	11.90	173.80	CP6467-149RK
CP6467-162PRME	16.2 (0.638")	19.05	10.00	206.48	CP6467-162RK
CP6467-173PRME	17.3 (0.681")	22.23	14.00	234.01	CP6467-173RK
CP6467-188PRME	18.8 (0.740")	22.23	11.90	276.73	CP6467-188RK
CP6467-202PRME	20.2 (0.795")	22.23	9.25	320.75	CP6467-202RK
CP6467-212PRME	21.2 (0.835")	25.40	14.00	352.77	CP6467-212RK
CP6467-218PRME	21.8 (0.858")	25.40	13.00	373.98	CP6467-218RK
CP6467-224PRME	22.4 (0.882")	25.40	11.90	395.49	CP6467-224RK
CP6467-237PRME	23.7 (0.933")	25.40	9.25	439.51	CP6467-237RK
CP6467-254PRME	25.4 (1.000")	26.99	9.25	504.93	CP6467-254RK

Issue No.	Date & No.	Alterations		Zone	Initials
		Particulars			
-	-	SEE SHEET 1 FOR ISSUE INFORMATION.		-	-



IMPORTANT NOTE
THE CP6467 MASTER CYLINDER HAS BEEN DESIGNED TO INCORPORATE AN ANTI-KNOCKBACK PLUG TO REDUCE PAD KNOCKBACK. THE PLUG CAN BE REPLACED WITH A SLEEVE TO REVERT THE MASTER CYLINDER TO A STANDARD CENTRE VALVE ABS TYPE.

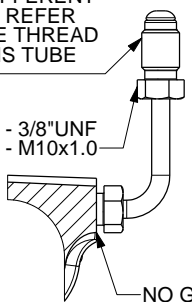
MASTER CYLINDERS WITH ANTI-KNOCKBACK PLUGS HAVE SUFFIX 'K' AND CYLINDERS WITH SLEEVES HAVE SUFFIX 'S'
EXAMPLE: CP6467-202PRME:K
CP6467-202PRME:S



GOODRIDGE SINGLE BANJO BOLT.
Pt No. 992-03-31, M10x1.00
GOODRIDGE BANJO TO YOUR PREFERENCE.

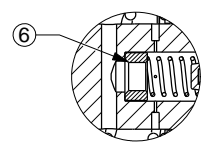
OUTLET OPTION B
THE DIFFERENT TYPES REFER TO THE THREAD ON THIS TUBE NUT.

2 TYPES:
CP6465-16 - 3/8"UNF
CP6465-17 - M10x1.0



OUTLET OPTION C

NO GASKET REQUIRED
GOODRIDGE, RIGHT ANGLE FITTING TO YOUR PREFERENCE.
GOODRIDGE, MALE TO MALE ADAPTOR M10x1.00 TO 3/8"UNF
Pt No. 305-03-31



MASTER CYLINDER WITH CP6467-117 SLEEVE FITTED

SCALE 1:1	SHEET 2 OF 2
DRAWN T HARGRAVE-SMITH	APPROVED
DERIVED FROM	
TITLE CP6467 MASTER CYLINDER CUSTOMER DRAWING	
DRG NO. CP6467-1CD	