

3 & 4-plate OT-III 5.5" Heavy Duty



Clutch Size: **5.5" (140 mm)**
 Available Disc Count: **3 & 4-plate**
 Total Weight: **See Table**
 P/N: **See Table**

Typical Applications

- Road Racing
- Endurance Racing
- Short Course Off Road

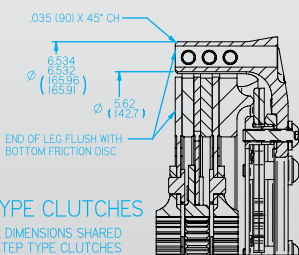
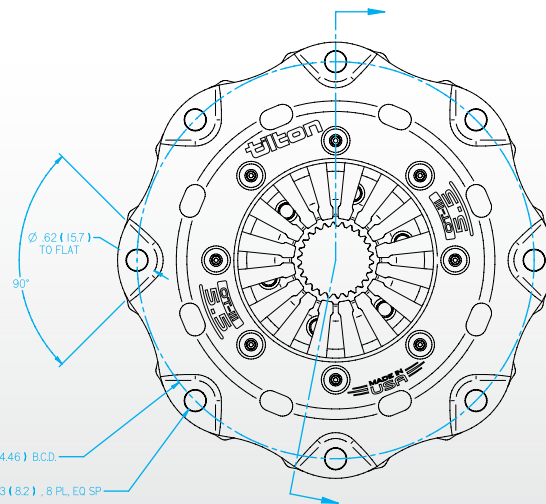
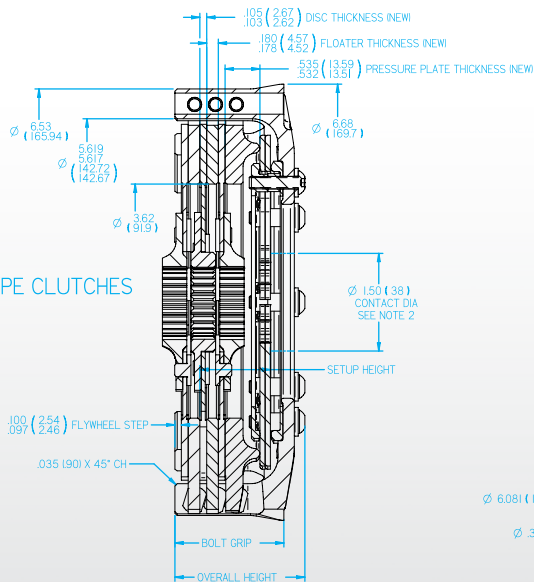


High-mass main pressure plate machined from proprietary material provides maximum heat capacity and resists warpage.



Unique geometry floater plates resist "pinching" due to extreme heat.

STEP TYPE CLUTCHES



POT TYPE CLUTCHES

NOTES:

1. PRIMARY DIMENSION IN INCHES. SECONDARY DIMENSIONS IN (mm).
2. CLUTCH WILL FUNCTION WITH ANY RADIUS FACED BEARING FROM 38mm TO 52mm DIA. 38mm BEARING HIGHLY RECOMMENDED FOR BEST FEEL AND LOWEST RELEASE LOAD.
3. ILLUSTRATED WITH DISC PACK P/N: 64140-9-ABA-36. DISCS SOLD SEPARATELY.

CLUTCH P/N	# OF DISCS	FLYWHEEL MOUNTING	SETUP HEIGHT (NEW)	SETUP HEIGHT (WORN)	BOLT GRIP	OVERALL HEIGHT
67-503HG	3	STEP	1.38 (35.1)	1.50 (38.1)	1.668 (43.37)	1.99 (50.5)
67-513HG	3	POT	1.38 (35.1)	1.50 (38.1)	1.568 (39.83)	1.89 (48.0)
67-504HG	4	STEP	1.61 (40.9)	1.73 (43.9)	1.952 (49.58)	2.27 (57.7)
67-514HG	4	POT	1.61 (40.9)	1.73 (43.9)	1.852 (47.04)	2.17 (55.1)

BALANCE MARKS MAINTAIN ALIGNMENT

Detailed Clutch Information

Clutch assemblies include clutch cover with diaphragm spring, pressure plate and floater plates.

	Torque Capacity <i>(lb-ft/Nm)</i>	Release Load* <i>(lb/daN)</i>	Weight** <i>(lbs/kg)</i>	M.O.I.** <i>(lb-in²/kg-m²)</i>	Pressure Plate <i>(ratio)</i>	Flywheel <i>(type)</i>	Part Numbers
3-plate	750/1020	850/375	7.7 lbs (3.5)	42.4 (.0125)	High	Step	67-503HG
	750/1020	850/375	7.7 lbs (3.5)	42.4 (.0125)	High	Pot	67-513HG
4-plate	1000/1360	850/375	9.3 (4.2)	52.7 (.0154)	High	Step	67-504HG
	1000/1360	850/375	9.3 (4.2)	52.7 (.0154)	High	Pot	67-514HG

Note: "Step-type" flywheels have a .100" step for the clutch's friction surface.

* Values listed are typical for release bearings with the recommended 38mm contact diameter. Larger contact diameters will increase release load.

** Weight and M.O.I. includes discs.

Service Parts

Pressure Plates	Part Numbers
5.5", high ratio, heavy-duty	67-158HR

Floater Plate	Part Number
5.5", heavy-duty	67-159